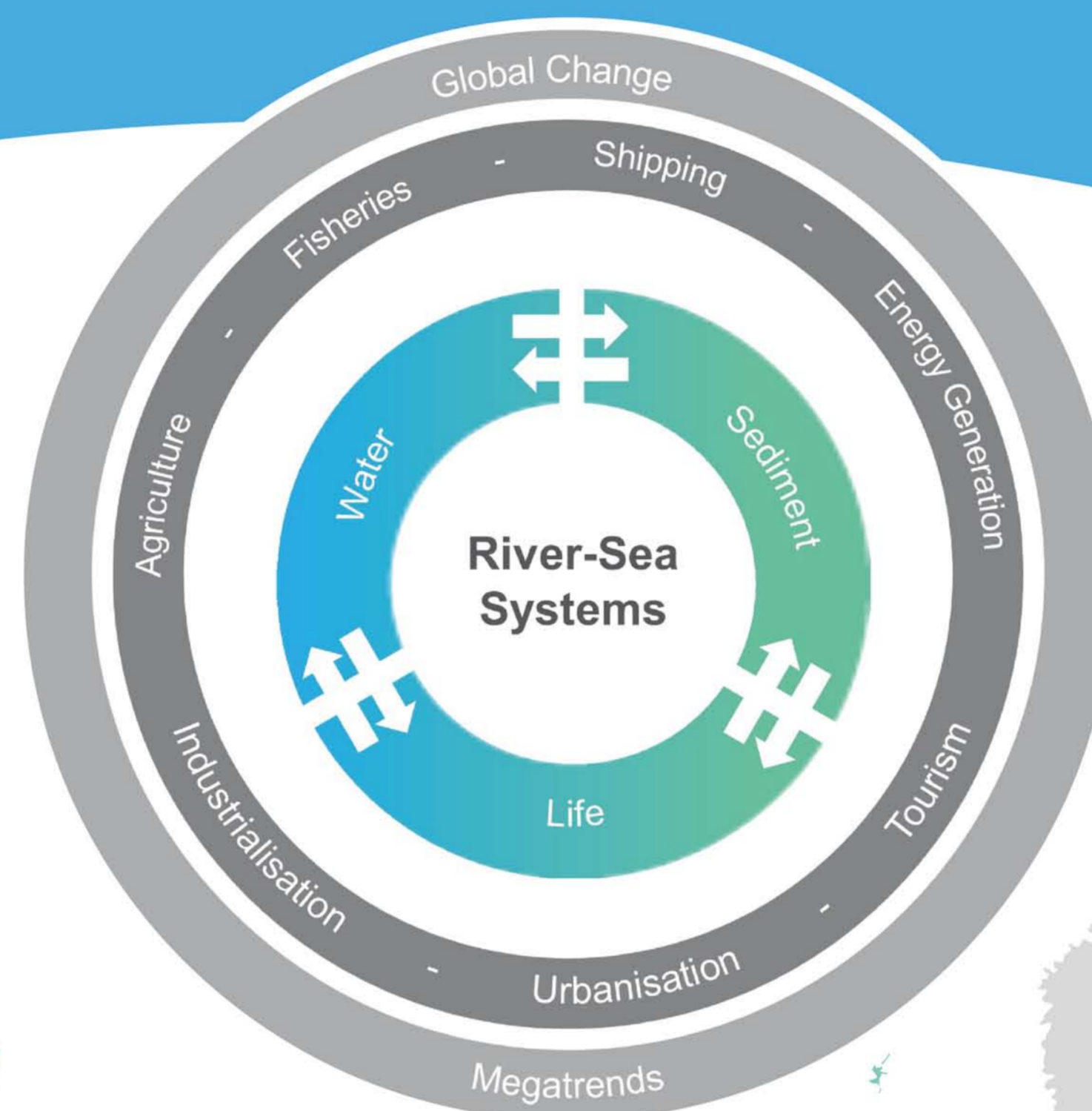


# Making River-Sea Systems Work



From the river source to sea, DANUBIUS-RI provides state-of-the-art research infrastructure to sustainably manage River-Sea Systems.

The pressures of Climate Change and 'human' drivers such as fisheries and transport have a lasting impact on the health of River-Sea Systems.

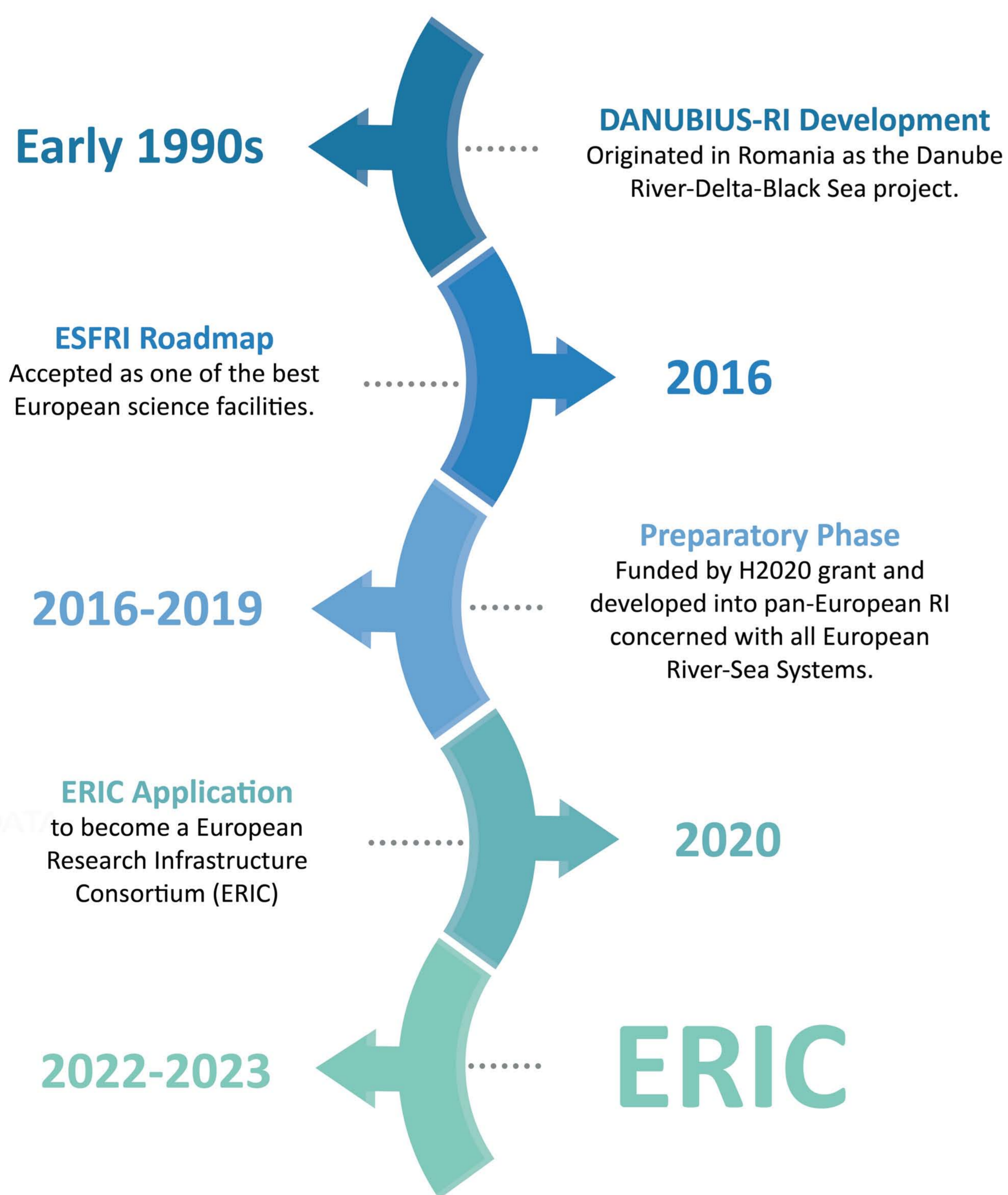


13 European countries

10 Supersites

4 Scientific Nodes

## The DANUBIUS-RI Journey



## Delivering Expertise & Facilities through

- State-of-the-art satellite observation capabilities
- Harmonised methodologies (DANUBIUS Commons)
- Integrated data portal
- Test-beds for restoration and adaptation solutions
- Education and training for scientists
- Citizen science activities for the wider public



[www.danubius-ip.eu](http://www.danubius-ip.eu)

Email: [danubius.research@geoecomar.ro](mailto:danubius.research@geoecomar.ro)



The DANUBIUS-RI ESFRI initiative has been led by GeoEcoMar, the consortium grouping over 30 institutions from 13 countries